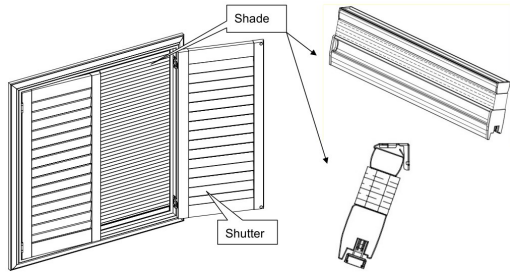


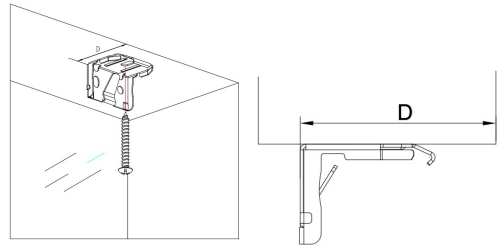
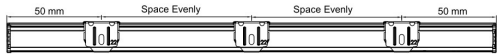
Installation Instruction of DayNite™ Shutter

**SmartFit Bottom Up system
(Shade Inside Mount only)**

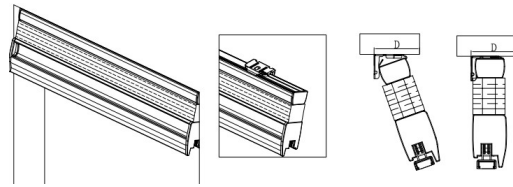
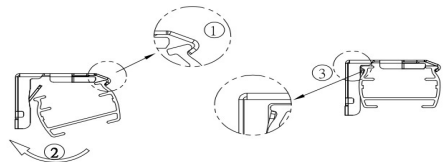


Step 1: Install Bracket & Install the Shade

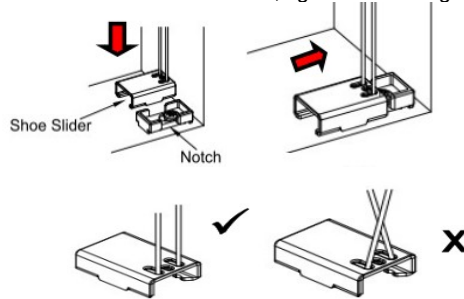
Take out the shade, installation bracket and screws from box, use a level to ensure all brackets are in alignment. Proper alignment of brackets will make installation easier. Measure 50mm from both ends of the head rail and mark the bracket location on the mounting surface. Before installation, check to make sure there is enough depth clearance for installation shade & shutter and no obstructions. **D SIZE**= Mounting depth clearance.(Please refer to the Minimum Window Depth in the DayNite™ Shutter program binder.)



For Top Standar Rail: Attach the rail in the front edge of the clip and push the back of the rail upwards (till it clicks in) as below drawing



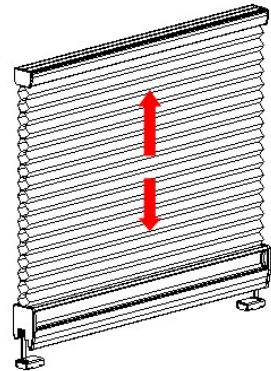
For Bottom shoe base: Install the shoe slider onto shoe base by pushing down the shoe slider from top of the notch then slide to the side to match the shoe base. Make sure that cords are nice, tight and not tangled.



For child safety, please check and ensure that there are no loose cords after the shade is completely installed

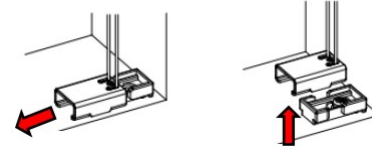
Step 2: Operate the Shade

After the shade is completely installed, Please hold groove of the bottom rail to operate the shade to the top/bottom and adjust the shade to level. Then you may operate the shade to any desired position. When the shade is installed at a high position, Please use Fiberglass Pole to operate the shade to up and down.

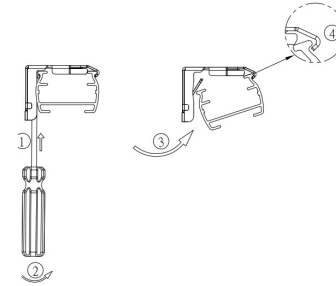


Step 3: Remove the Shade

Fully raise the shade to the top standard rail. Remove the bottom shoe slider from the shoe base as below.

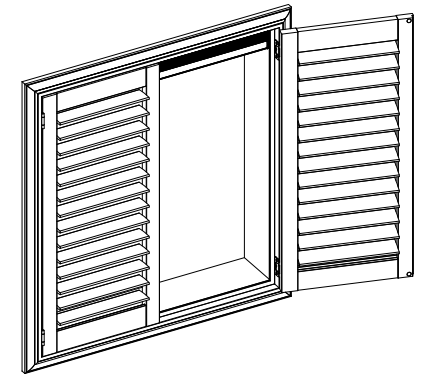
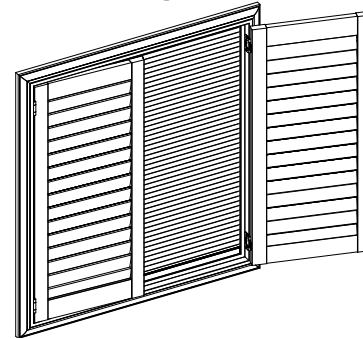


Insert screwdriver into the gap between the back of the top Head rail and the bracket. Gently maneuver the screwdriver toward yourself to pry the bracket.



Step 4: Install Shutter

Install the shutter frame first, and then the panel. Make sure the panels open and close smoothly, and the DayNite™ installation is complete.



Cleaning Instructions

Routine cleaning will help maintain the beauty of your shade. The shade can be cleaned by using a soft brush, vacuumed with a low suction hand-held vacuum, cleaned ultrasonically (specify that a mild solution must be used and that the head rail should never be immersed in liquid), or dampen a clean cloth with a warm water and mild detergent solution to dab the spot until it's gone (do not rub!).

Troubleshooting

Problem	Solution
The shade will not snap into the mounting brackets	Check if Top mounting brackets are aligned and locked in place. Refer to below drawing